



Sumi-e Society of America, Inc.
63rd Annual Juried Exhibition
April 1- May 1, 2026



<http://sumieshow.org>

The National Board of Directors of the Sumi-e Society of America, Inc. invite you to enter the 63rd Annual Juried Exhibition at the Bee Cave Arts Foundation (BCAF) The Hive Gallery in Bee Cave, Texas. The purpose of the exhibition is to publicly show the best current East Asian brush painting and calligraphy and to further the Society's mission. A combination of cash and other awards, approximating \$7,000.00 in value, will be awarded.

PLEASE READ THIS ENTIRE PROSPECTUS CAREFULLY SO AS NOT TO RISK DISQUALIFICATION

Please submit early so we can assist you with any technical issues in the entry process.

ELIGIBILITY: This competition is open to all artists.

MATERIALS- Brush painting or calligraphy must be in Asian ink, or Asian ink and watercolor on Asian rice* paper, shikishi boards or silk. The predominant element must be ink and direct brushwork on the base, however, techniques such as monoprinting, suminagashi, spraying, or non-relief collage may be incorporated. Note that collage from printed materials, newspaper, magazines, photographs, etc. is not allowed. Your work must be an original painting, no digital, copies, giclee or prints. If you used a non-traditional technique, note it under Description.

**Generic term for those papers traditionally used for East Asian brush painting, but not limited to those containing rice fiber.*

ORIGINALITY - Artwork must be **ORIGINAL** and created without instruction. No works will be accepted that were created in a class or by other media instruction (book, DVD, YouTube, etc.) or in collaboration with other artists or Artificial Intelligence (AI). No touch-ups, changes, or additions by another artist or teacher are allowed.

GALLERY REQUIREMENTS- Art content must be family friendly and excludes nudes, offensive and violent subject matter, or political statements. The BCAF has the right to refuse any artwork.

CALLIGRAPHY- other than signature or date must be accompanied by a typed English translation of the calligraphy on both painting and calligraphy artwork.

CREATION DATE- Only artwork completed within the past 2 years and which has not previously been exhibited in a Sumi-e Society annual exhibition is allowed. Previous entry elsewhere is permitted.

IMPORTANT DATES IN 2026

February 1DEADLINE for entering at <https://www.onlinejuriedshows.com>

February 20NOTIFICATION of Acceptance - email reminder. Artist must open their Artist Profile at [onlinejuriedshows.com](https://www.onlinejuriedshows.com). Check each artwork to see which artworks were accepted and which were declined.

March 24,25,26.....SHIPPED ARTWORK DUE

March 28.....HAND DELIVERIES- between 3pm and 5pm

April 1- May 1.....EXHIBITION OPEN Wed- Saturdays, 1-5pm, Bee Cave
Arts Foundation, The Hive Gallery, 12912 Hill Country
Blvd., Bee Cave, TX 78738

April 9.....WELCOME RECEPTION at Sonesta Bee Cave Hotel (complimentary) 6-9pm

April 10.....PAINTING WORKSHOP with Peihong Endris 9-11:30am & 12:30-3pm
Lunch included

April 11.....PAINTING WORKSHOP with Susan Frame 9-11:30am

April 11.....Judge, Juror Peihong Endris Gallery Walk Through with Artists 1-2pm

April 11.....ARTIST RECEPTION, 2-4pm

April 11.....AWARDS CEREMONY BANQUET and ANNUAL MEETING
with remarks about the exhibition by Peihong Endris, 6-9pm

April 12..... PAINTING WORKSHOP with Susan Frame, 9-11:30a

May 1.....EXHIBITION CLOSES

May 2.....PICK UP ARTWORK, 10am-noon

May 2.....Shipping Company Package artwork for return shipping

JUROR, JUDGE AND WORKSHOP INSTRUCTOR

Artist's Journey: Being an artist"

Peihong D Endris

Being an artist is to walk the path of harmony between traditional and nature. As a Chinese brush painting artist, I draw inspiration from the timeless elegance of historical masterpieces-study the bold strokes of Bada Shanren, the poetic subtlety of Ma Yuan, and the vibrant vitality of Qi Baishi. Yet the true teacher lies in nature itself: the whisper of bamboo, the dance of Mountain mist, the resilience of plum blossoms in winter. With ink and brush, I seek to capture not just form, but the Qi-the living spirit-that flows through ancient art and the natural world, weaving past and present into a single breathing composition.

Peihong Dong Endris

Rooted in Chinese traditions, Peihong paints with a vigorous style to create artwork that carries profound messages.

Born in China 1959, Peihong graduated from Central Academy of Fine Arts in 1993. From 1990-1999 she served as an art editor for the Beijing Review, a national weekly magazine. Her artwork has been exhibited internationally in China, South Korea, Singapore, and Tokyo, as well as stateside in California and throughout Texas. Her work has also been included in several group exhibitions, art books and prestigious collections.

Peihong's painting titled Fragrant Moonlit Night was presented by the Chinese government to the French government. Peihong moved to the United States in 1999 and currently resides in Pearland, TX where she continues to produce work and develop her style. Peihong has led classes and workshops on Chinese ink art at Houston area institutions including the Glassell School of the Museum of Fine Arts, Houston, the Watercolor Art Society of Houston, Rice University, MD Anderson Cancer Center and The Jung Center.

Selected Solo Exhibitions

2021 Jan-May "Orchestrated Dance of ink & Water at Pearl Finch Museum of Fine Arts

2018 Oct.- Nov. "The Voice of Brush Meet Voice of Business" at Pearland Chamber of Commerce TX

2012 Jan-Feb. "Fine Art Exhibit of Year of The Dragon" at HCC Houston Community College Southeast

2008 "The Journey of a Chinese painter from East to West" at The Jung Center Houston

2007 "Evolution of a Chinese painter "at Bank of America Houston

2000 "The Art of Peihong Dong at New Century Art Center Houston

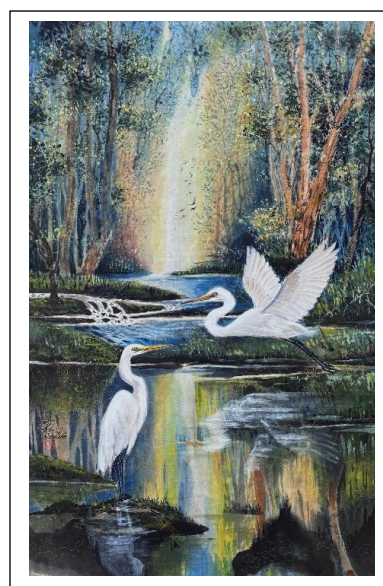
1999 May "The Art of Peihong Dong" at Nan Hai Art Gallery in Millbrae, CA

1998" The Art of Dong Peihong" at Dynasties Antique & Art Gallery, Singapore

Education:

1993 M.A. Central Academy of Fine Arts China.

1980-1984 B.A. Beijing Workers University



WORKSHOP INSTRUCTOR

SUSAN FRAME

Susan Frame is a sumi-e artist living and working in Minneapolis, MN. Her journey with sumi-e began in college in 1973 and has led her around the world for studies, exhibitions, and teaching opportunities.

She was born in Minnesota and graduated with a BA from Gustavus Adolphus College, St. Peter, Minnesota. Besides Minnesota, she has lived in Taiwan and Florida. In Taipei, Taiwan, she studied Chinese flower and bird painting with Lin Hsin Jin, 1979-1980. She was a member of the first group of Western artists invited to study classical landscape painting/calligraphy at China Academy of Fine Arts, (formerly Zhejiang Academy of Fine Art), Hangzhou, China, 1984. It was here that she met her lifelong Mentor, Zhuo Hejun, a contemporary ink wash landscape master painter. She has also studied with esteemed ink painting artists in both Asia and the United States: Lu Yanshao (landscape painting), Cheng Khee Chee (watercolor/contemporary ink painting), Gu Wenda (contemporary ink painting), Wang Dongling (calligraphy), Wuscious Wong (contemporary landscape painting).

Susan's exhibition history includes solo exhibitions in a number of galleries and museums in Florida, Minnesota and IA. She has shown in invitational and juried exhibitions in China, Japan, Paris, South Korea, Thailand, Toronto, New York City and Chicago, as well as in many states in the US. She has participated in the Sumi-e Society of America Inc's (SSA) annual juried exhibitions since 1983 and has won many awards in those shows.

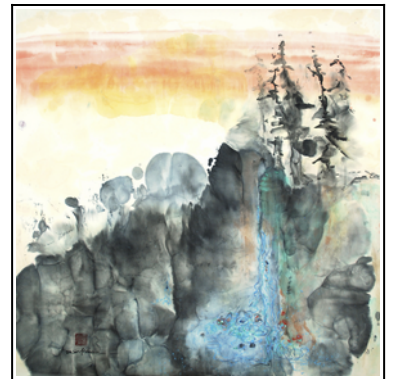
Susan has been teaching sumi-e more than 40 years and has been invited to lead workshops for nearly every chapter of the Sumi-e Society of America. She has taught workshops, classes, and demonstrations across the country and internationally for museums, art associations, art centers, communities and schools. Locations include Alaska, Ohio, Guatemala, Paris, New York City, Minnesota and Florida.

Her book, *Japanese Ink Painting: Beginner's Guide to Sumi-e*, Sterling Publishing Co, USA. 2002, was published in seven countries. Her work is also published in numerous haiku publications, and is included in museum, corporate, public, and international private collections.

In 1998-2005, Susan was the editor of the *Sumi-e Quarterly*, a publication of the Sumi-e Society. She has also held the office of First Vice President and currently is Board Member-at-Large for the Society. She is the current president of the Ming Chiao (Minnesota Bridge) Chapter of SSA.

She has designed sumi-e inspired logos, and created three sumi-e inspired clothing lines.

www.susanframe.com



Artist's Statement

Susan Frame

My paintings are about the beauty of our world. A simple backyard flower inspires me, as does the Northern Minnesota drama of rugged cliffs, cathedral trees and cascading waterfalls. Sumi-e is about painting the spirit of the subject and it's essence. Picasso once said, "If I paint a wild horse, you might not see the horse ... but for sure you will see the wildness." This is also the heart of sumi-e. I often begin a painting without a plan and I love to experiment with my approach and technique. There is a sumi-e saying that you need to control so that you can let go of control. Learning to control the brush is important. Letting go of control opens the whole world of spontaneity and improvisation. My process is a wonderful journey from the first ink stroke through splashing, pouring, and brushing colors. It fills my heart and brings me peace. I hope it brings beauty and peace to you too.

JURYING: Digital images will be juried for inclusion in the exhibition, using accepted standards of East Asian brush painting. Calligraphy entries will be considered for their artistic merit and not necessarily as a form of communication. This does not exclude classic calligraphy. Artists whose work is accepted, will ship the original work for the judging of awards and inclusion in the exhibition. The Sumi-e Society reserves the right to refuse any artwork that it deems improperly presented, unsafe, damaged or not the same as represented in the digital image submitted for judging. No withdrawals, substitutions or price changes (except to NFS) will be accepted after a work is juried into the exhibition.

This competition will be conducted in **THREE STAGES**, based on accepted standards of photographic quality and East Asian brush painting.

1. The digital images will be screened for photographic quality suitable for juror review. Images that do not meet the quality standard required will be disqualified from further consideration.
2. Only images of artwork that meet the quality standard described above will be sent to the juror for consideration for inclusion in the exhibition, using accepted standards of East Asian brush painting.
3. Digital images of works will then be considered by the juror for inclusion in the exhibition. No withdrawals or substitutions are allowed once a work has been accepted.

ENTER THE EXHIBITION -There are two Categories - PAINTING and CALLIGRAPHY.
Artists may enter one or both categories.

MEMBER ENTRY FEES for Members of Sumi-e Society of America, Inc.

Paintings - 1 or 2 paintings for \$40

Calligraphy - 1 or 2 calligraphy for \$40

Painting and Calligraphy - \$60 (1 or 2 paintings and 1 or 2 calligraphy)

NON-MEMBER ENTRY FEES

Paintings - 1 or 2 paintings for \$95

Calligraphy - 1 or 2 calligraphy for \$95

Painting and Calligraphy - \$115 (1 or 2 paintings and 1 or 2 calligraphy)

(The Non-Member price includes SSA dues of \$50 for 2026)

Fees cover all entries, up to two (2) per category, four (4) per entrant.

Pay through OnlineJuriedShows.com using PayPal or Credit Card.

DIGITAL ENTRY PREPARATION:

1. Works must be **MOUNTED, SIGNED AND/OR SEALED** before photographing. Show only the image, no frame or mat in the photo. The digital image should accurately portray the original art. Be sure your images are rotated with the correct side up.
2. **IMAGE SIZE** must be listed to the nearest inch.
3. **DIGITAL IMAGE SIZE** must be at least 1920 pixels on the longest side at 72 dpi, but smaller than 4MB. Images must be in JPEG format, sRGB color space. If you need help photographing your work or sizing your images click on <https://www.onlinejuriedshows.com/HowtoEnter.aspx>.
4. **SUBMISSION** - Go to <https://OnlineJuriedShows.com>.
Fill out an **Artist Profile** to register with Online Juried Shows or **Log In** if you registered before.
Find the Sumi-e Society of America logo on <https://OnlineJuriedShows.com>
Click on "Enter This Show"
Upload your artwork images one at a time.
Pay entry fee through Onlinejuriedshows.com by PayPal or Credit Card.
5. **HELP** is available from the videos on the website and from 888-666-1351) or Sumi-e Society Board members.



6. EMAIL - Please add Services@OnlineJuriedShows.com and Manager@OnlineJuriedShows.com to your email contact list to ensure notifications received.

ONLINE ENTRY DEADLINE: February 1, 2026

All digital entries must be submitted on-line not later than midnight Pacific Time.

FRAME SIZE REQUIREMENT:

MAXIMUM FRAMED SIZE: 42 inches in either direction.

MINIMUM FRAMED IMAGE SIZE: 14 inches in either direction

FRAMING SPECIFICATIONS: Metal sectional frames in silver, gold, pewter, gray or black are highly recommended for durability and ease of hanging. All paintings must be mounted, framed and under acrylic or Plexiglas, ready to hang. Do not use glass. Framing used must be strong enough to withstand all necessary handling. Frames must be in excellent condition free of scratches, dents, chips or other visible flaws. All artwork must be wired for hanging. No sawtooth hangers.

MATS: Outer mats must be a LIGHT, NEUTRAL COLOR. Mats that are too dark will be excluded or included in the show at the discretion of the National Co-Chairs. Hanging scrolls will not be accepted.

NOTIFICATION / ACCEPTANCE: February 20, 2026

Notifications are sent through Constant Contact from onlinejuriedshows@gmail.com

To ensure receipt of this notification, please add onlinejuriedshows@gmail.com to your contact list, or safe senders' list. Artists are responsible for checking their Artist Profile Onlinejuriedshows.com.

CATALOG: The Exhibition Catalog of Award winners and all artwork accepted into the show will be sent to all Society members. Additional copies will be available from the Sumi-e Society for \$8.00 in the US, \$10.00 to Canada, Mexico, and \$15.00 outside North America by airmail.

PUBLICATION: Artists give the Sumi-e Society the rights to use the images of all submitted works in the print and digital publications of the Society.

SALES: All works on exhibit will be offered for sale, unless marked NFS. A donation of 30% is required to be made to Sumi-e Society of America, Inc who will pay The Bee Cave Arts Foundation for all art work sold during and through the exhibition.

WORKSHOP: There will be three days of workshops, April 10,11,12, 2026. Painting with Peihong Endris on April 10 from 9-11:30am and 12:30-3pm. with lunch included. Painting with Susan Frame on April 11 from 9-11:30am and April 12 from 9-11:30am.

More exhibition, events, awards banquet and workshop information and registration materials will be emailed to SSA members. Information will also be posted on the Society website <http://sumiesociety.org>.

2026 PROSPECTUS CHECKLIST

**We want your application to be successful.
Please carefully check this list before submitting your artwork.**

- () Artwork has been created within 2 years of entry date.
- () Artwork was not accepted into a previous SSA National Juried Exhibition.
- () Artwork has been mounted, signed and/or seal applied before photographing.
- () Photographed artwork has been properly cropped so that no mat background shows and it was not photographed in a frame.
- () This is not a copy of someone else's art or someone else's art with small changes.
- () This was not created under instruction as a class demo or by using media instruction.
- () This was not done using Artificial Intelligence.
- () The photograph is an image of the original painting and not a photograph of a digital image, print, or giclee.
- () Collage did not use printed materials and only pieces painted yourself.
- () Predominant element is ink, watercolor and direct brushwork on rice paper, gold and silver papers, shikishi boards or silk.
- () Artwork size is within the maximum or minimum requirements.
- () Artwork meets the framing and mats specifications.
- () By entering you are making a commitment to ship your artwork if it is accepted into the exhibition.

QUESTIONS: If you have any questions about the exhibition, please contact:

Gail Threinen, National Co-Chair
Lakeway, TX
651-269-8502 (c)
gail.threinen@gmail.com

Patricia Gustafson, National Co-Chair
Faribault, MN
651-260-6954 (c)
patriciaagustafson@gmail.com