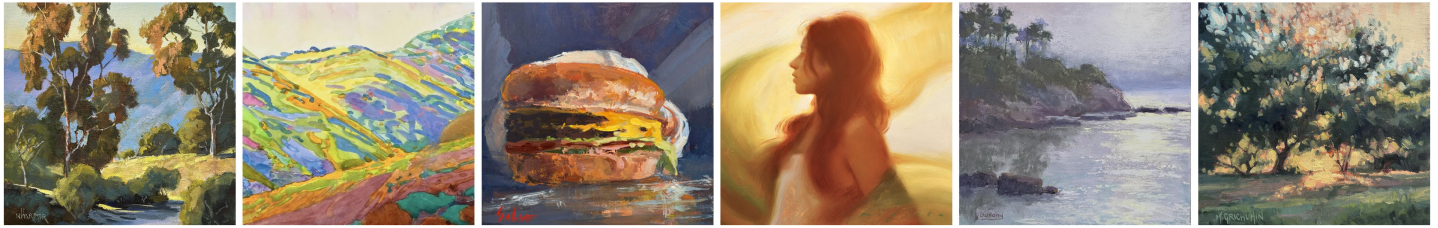




LAGUNA PLEIN AIR PAINTERS ASSOCIATION



PROSPECTUS: 2026 "LPAPA Squared" Juried All-Member Show

SUBMISSIONS:

- **Submissions Open:** January, 2026, through OnlineJuriedShows.com.
- **Submission Deadline:** Monday, October 19, 2026 (*before midnight PDT*)
- **Notifications Sent On or Before:** Monday, October 26, 2026

EXHIBITION OVERVIEW:

- **Exhibition Title:** 7th Annual "LPAPA Squared" Juried All-Member Show (<https://lpapa.org/101926-lpapa-squared-juried-art-show/>)
- **Online Art Catalog:** Nov 30th - Jan 4th (*all shows and awards continue to be visible online after show ends*)
- **Online Auction:** Monday, November 30th (10AM PST) - Thursday, December 3rd (8PM PDT)
- **Gallery Exhibition:** Thursday, December 3rd - Monday, January 4, 2027
- **Art Walk Reception:** Thursday, December 3rd (6PM-9PM) (*Awards announcement 7PM*)
- **Gallery Location:** The LPAPA Gallery, 414 N. Coast Hwy., Laguna Beach, CA 92651

ART ELIGIBILITY & SPECIFICATIONS:

- **Qualifications:** Open to all LPAPA Signature, Artist and Student Members in good standing; membership needs to be current through **January, 2027**.
- **Subject Matter:** Open to all subject matters created in plein air or in studio on an 8" x 8" canvas.
- **Artwork:** Must be original, painted outdoors onsite or in studio within the last year, and not previously shown in a LPAPA Gallery show. No digital artwork will be accepted. All accepted artwork needs to be signed by the artist.
- **Sales:** Accepted Finalist artwork must be available for sale exclusively through LPAPA upon acceptance and for a minimum of 30 days after the show ends.
- **Maximum & Minimum Size:** Unframed 8" x 8" canvas/panel/paper before framing.
- **Framing & Wiring:** All accepted work must be appropriately glazed and professionally framed in a **square frame**, wired, and ready to hang. Wires must provide a minimum 2-inch clearance between the wire and the top of the frame, as needed, to prevent the hook from showing. Incorrectly wired accepted work will require rewiring and may delay exhibition.

Framing Service Note: Unframed artwork may be delivered/shipped to [Randy Higbee King of Frames](#) for framing; they will deliver the framed work to the LPAPA Gallery and arrange return shipping if the painting is not sold. A percentage of the framing cost is donated to support nonprofit LPAPA's art and education programs.

SUBMISSION INSTRUCTIONS:

- **Entry Fee: \$40.00** Entry Fee for up to 2 painting images; each additional painting image is **\$5.00**. You may submit up to a maximum of 6 painting images. A minimum of 1 and no more than 3 entries per individual artist will be accepted. Entry Fees are non-refundable and must be paid through OnlineJuriedShows.com.
- **Images:** JPEG images are uploaded through [OnlineJuriedShows](https://OnlineJuriedShows.com). If you need help entering your images, please contact onlinejuriedshows@gmail.com or call 888-666-1351.

- **Minimum Submission Requirements:** A minimum of 3 entries per Member awards category is required for full awards to be presented.
- **Notification:** Notifications to be sent to artists via email by **Monday, October 26, 2026**, or as soon as possible after jurying is completed.

ART DROPOFF & PICKUP:

- **Drop-off Deadline: Tuesday, December 1st, no later than 1PM;** the gallery will be open 10AM-1PM on this Tuesday for hand-carried artwork; enter through side courtyard door near fountain.
- **Shipping:** Shipped work needs to arrive **on or before Friday, November 20th** (before the Thanksgiving holiday); do not ship for Tuesday or Wednesday delivery.
- **Pickup of Unsold Work: Tuesday, January 5th;** the gallery will be open 10AM-1PM on this Tuesday for artwork pick. As an alternative, Artists may pick up during regular gallery hours after show closes or arrange and pay for return shipping.

Late Delivery: Accepted finalist artwork delivered after the 1 PM, December 1st deadline may not be hung in time to be included in the awards judging.

Unclaimed Artwork Policy: Unclaimed artwork remaining at the gallery 15 days after the show closing, without a scheduled pickup or paid return shipping, will be considered abandoned and becomes the property of LPAPA.

Liability: LPAPA, its staff, and volunteers will take the utmost care, however, artists are responsible for insuring their own artwork at their own discretion and expense. LPAPA will not be responsible for any loss or damage for any reason.

Online Exhibition: The gallery show will be viewable online through LPAPA's interactive online Art Catalog and online Silent Auction. LPAPA will showcase the Signature Artist finalists, and the Artist and Student Award Winners, for sale through Artsy: <https://www.artsy.net/partner/laguna-plein-air-painters-association>.

AWARDS:

- **Signature Member Category:** 1st Place \$500 | 2nd Place \$300 | 3rd Place \$200
- **Artist Member Category:** 1st Place \$500 | 2nd Place \$300 | 3rd Place \$200
- **Student Member Category:** 1st Place \$500 | 2nd Place \$300 | 3rd Place \$200

SALES COMMISSION:

- **Commission:** 50% to Artist, 50% to LPAPA (*LPAPA's commission percentage may be less for Auction sales*).
- **Payment:** Sales proceeds are paid by **ACH Direct Deposit**, typically within 15 days of the show closing. LPAPA may require a W9 prior to payment processing.

GALLERY LOCATION & CONTACT:

The LPAPA Gallery

414 North Coast Highway, Laguna Beach, CA 92651
(949) 376-3635 | info@lpapa.org

Hours: 11:00 AM – 5:00 PM, Thursday through Monday, and by appointment.
First Thursdays Gallery Hours: 1PM - 9PM; First Thursday Art Walk Reception 6PM - 9PM.

Show Coordinator: Bonnie Langner, LPAPA's Executive Director
Direct: (925) 683-8374 | bonnie@lpapa.org

BY SUBMITTING TO THIS SHOW YOU ARE REPRESENTING THAT YOU HAVE READ AND AGREED TO THE TERMS SET OUT IN THIS PROSPECTUS.